



Tannehill Development

Building the largest Adaptive Accessible Mountain Bike Trail System in the Southeast



Peavine Branch

Hogpen Creek

Center Rd.



Project Overview

BUMP aims to create the South's first purpose-built trail system designed for both adaptive and traditional mountain bikers, addressing the critical infrastructure barrier to adaptive cycling participation.

Key Innovations:

- Universal Trail Design: Wider surfaces, optimized turn radii, and strategic passing zones
- Comprehensive Difficulty Progression: Trails catering to all skill levels
- Holistic Accessibility: Upgrades from parking lot to trail end

Project Objectives:

- Develop the nation's premier adaptive mountain biking facility
- Establish new standards for inclusive outdoor recreation
- Create a model facility demonstrating barrier-free trail design

Strategic Impact:

- Supports IMBA's inclusivity goals
- Enhances Birmingham's outdoor recreation destination status
- Potential economic benefits for local communities
- Attracts talent by improving regional recreational amenities



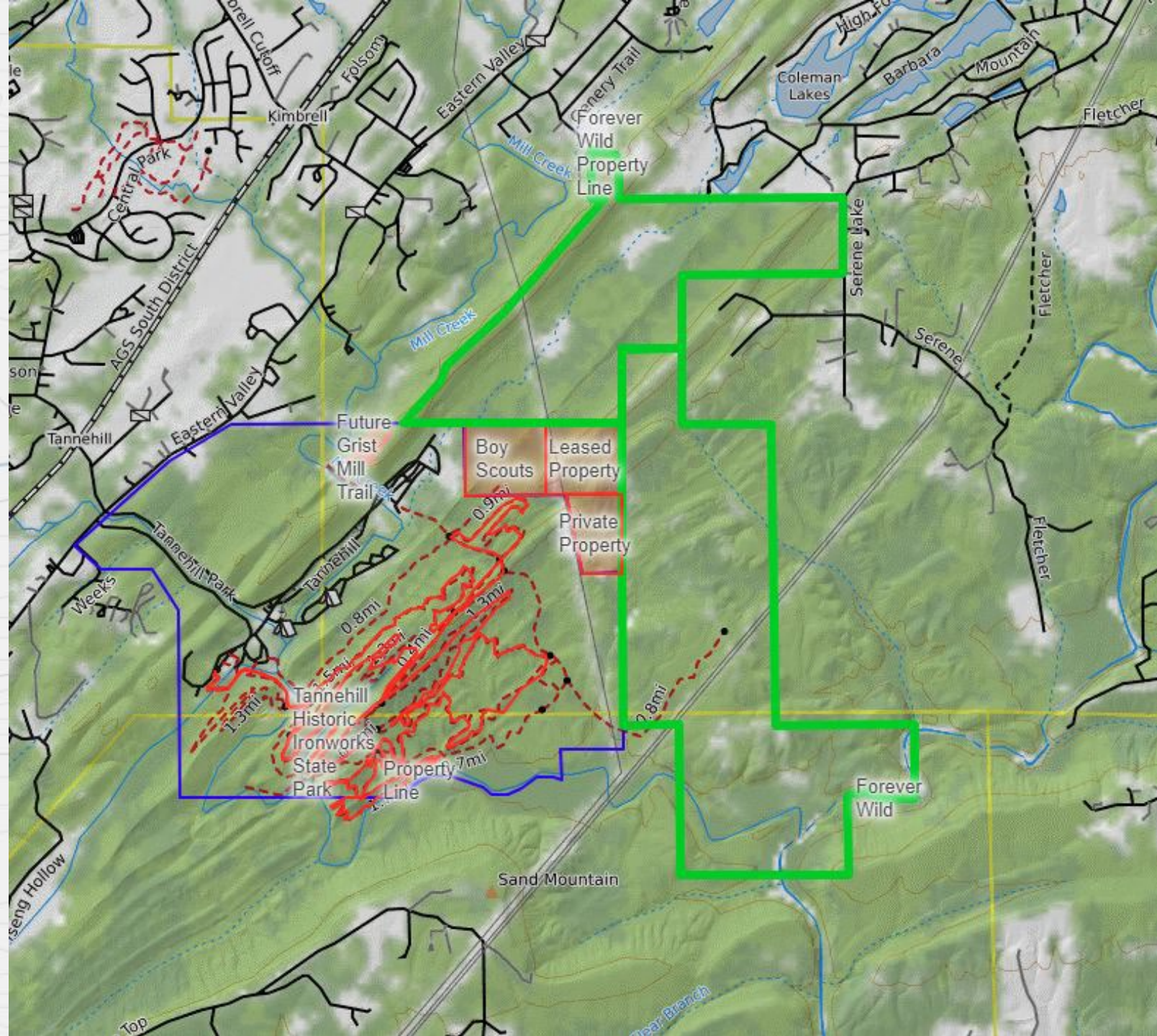
Birmingham Urban Mountain Pedalers

Build Maintain Preserve Ride

- BUMP is a registered 501c3 non-profit dedicated to building and maintaining multi-use trails in the Birmingham area.
- It is one of the largest and oldest mountain bike clubs in the Southeast, with nearly 500 members.
- Over the past 30 years BUMP developed, built & managed a 30- mile multi-use trail system at Oak Mountain State Park, turning it into one of the premier mountain bike destinations in the South.
- BUMP is a completely self-sustaining volunteer organization with no paid staff. We've won multiple awards from the State of Alabama for our dedication to improving outdoor recreation at Oak Mountain.
- Over the past 3 years alone BUMP has engaged over \$165,000 hiring professional builders to build and rework several trails at Oak Mountain State Park considered some of the best in the southeast.

Tannehill Ironworks Historical State Park

- Tannehill is a 1500-acre historical state park. Unlike traditional state parks, Historical State Parks are governed by a commission and funded exclusively by their fees.
- Tannehill currently has roughly 17 miles of trails (shown in red) built and maintained by BUMP.
- Recent Forever Wild acquisitions have added 1000 acres of forest land (outlined in green) to Tannehill.
- Tannehill presents a unique opportunity to expand much-needed trail access in a beautiful, historical park, and serve the adjacent Jefferson, Bibb, and Tuscaloosa County communities, and destination mountain bikers from across the region.



The Plan

Bump has approval to build an additional 14 miles of trail at Tannehill Ironworks Historical Park. This project would increase the total trail mileage to around 30 miles of trail. Bump (in consult with The Lakeshore Foundation and The Adaptive MTB Project) plans to make Tannehill the largest Adaptive Mountain Bike accessible trail system in the Southeast.

Phase 1-3 (Dark Blue, Orange, Purple)

- Construct 8.8 miles of multi use trails with Bump Volunteer Labor. (estimated value of volunteer labor \$331,000)

Phase 4 (Light Blue)

- With grant funding we plan to construct 5.2 miles of professionally built trails

ADA Friendly Facilities

- With Grant funding we plan to refurbish 3 Bathhouses

Future Expansions and Updates

- We plan to renovate the network of abandoned horse trails to optimize them hiking, biking, running, and aMTB.
- We plan to make adjustment so select trails within the existing trail system to ensure that they are accessible by aMTB.

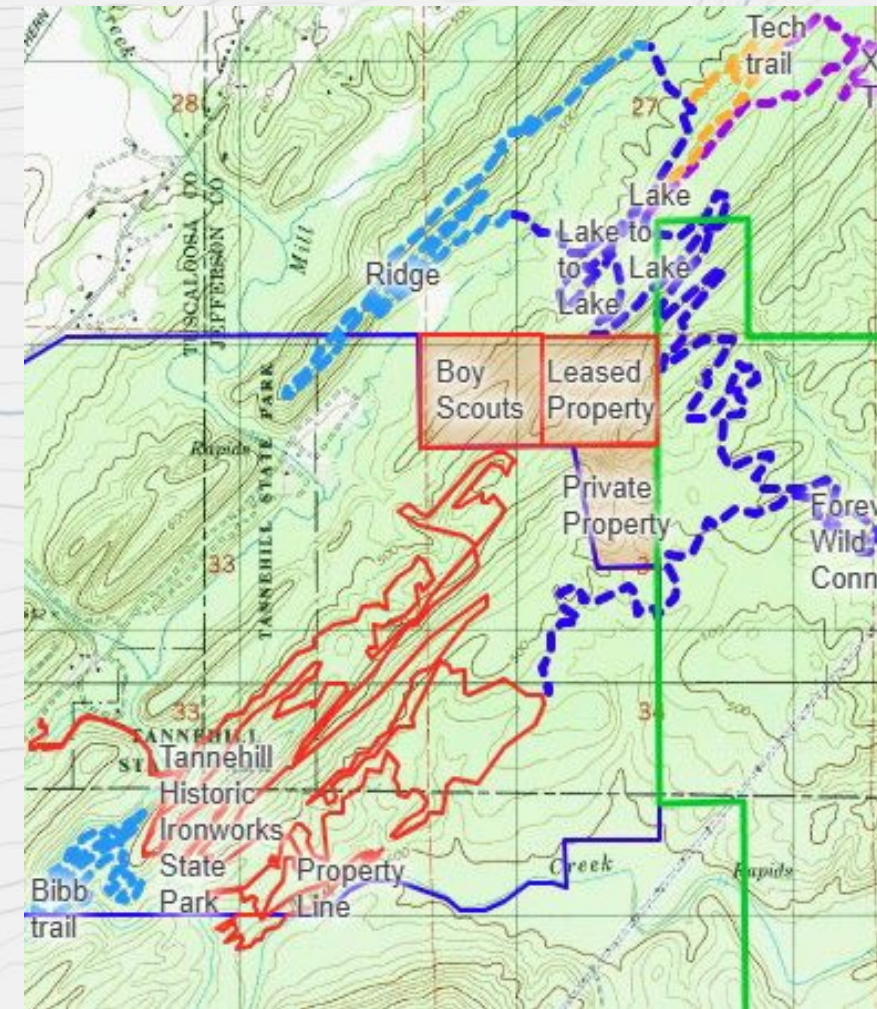


Figure 1

Tools for the Job

To reach our goals and continue expansion within the park we need to purchase some additional equipment

- **Purpose**
 - To enhance operational efficiency, reduce long-term maintenance costs, and expand park support capabilities through strategic equipment acquisition.
- **Proposed Equipment Investments**
 - Kubota U17 Mini Excavator: \$30,792
 - Kubota SL1000 Skid Steer: \$38,972
 - Skid Steer Brush Cutter Attachment: \$6,845
 - Utility Vehicle: \$19,995
- **Strategic Benefits**
 - Reduce future maintenance time and labor costs
 - Increase operational capabilities across multiple park locations
 - Optimize volunteer workforce utilization
 - Enable potential expansion of maintenance support to additional parks



The proposed one-time capital investment will provide essential infrastructure for more efficient, self-sufficient trail maintenance and development, directly supporting our long-term organizational goals.

Project Investments

Project Budget

Overhead	Public Grants	Volunteer/In-Kind	Seeking Donors
Administration	\$0.00	\$0.00	\$0.00
Marketing	\$0.00	\$0.00	\$0.00
Design	\$0.00	\$0.00	\$0.00
Equipment			
Mini Excavator	\$0.00	\$0.00	\$30,792.44
Utility Vehicle	\$0.00	\$0.00	\$19,995.00
Skid Steer	\$0.00	\$0.00	\$38,972.00
Brush Cutter	\$0.00	\$0.00	\$6,845.08
Renovation			
Farley Bathhouse #1	\$467,000.00	\$0.00	\$0.00
Farley Bathhouse #2			
Campground 3 Bathhouse			
Trail Construction			
Phase 1-3 Build	\$0.00	\$321,921.00	\$0.00
Phase 4 Build	\$187,050.00	\$0.00	\$0.00
Bike Wash Station	\$0.00	\$5,000.00	\$0.00
Maps and Signage	\$0.00	\$5,000.00	\$0.00
Total	\$654,050.00	\$331,921.00	\$96,604.52
Project Total	\$1,082,575.52		



Impact

- One of the Core Values of IMBA is to promote inclusion in mountain biking. As they re-evaluate the Ride Center Application form, we expect them to heavily weigh Adaptive Access opportunities and facilities in the future. Our vision at Tannehill will keep us ahead of the curve and possibly allow us to increase our rank on the ride center evaluation.
- Nearly doubling the amount of trail mileage at Tannehill would move it into the category of “Destination Trail System” resulting in a boost to tourism in this area of Bibb and Jefferson Counties.
- 12.4% of the Population of Alabama lives within 25 miles of Tannehill.
- The additional campers and day-use guests would increase revenue for Tannehill and allow for them to continue to maintain and potentially upgrade the facilities.
- The addition of new trails at Tannehill would allow the park & BUMP to host more events, increasing revenue for both groups and drawing more people to the area.

*"There are a fair amount of adaptive trails around the United States, but very few trail systems that are fully adaptive friendly with multiple trail routes."
- Brian Peachey, Adaptive MTB Trails Project*



Building the largest Adaptive Accessible Mountain Bike Trail System in the Southeast

With your help we can:

1. Create the nation's premier adaptive mountain biking facility at Tannehill State Park, expanding our 30-year legacy of trail development in the Greater Birmingham Area beyond our existing 60-mile network across Tannehill, Oak Mountain State Park, and Trussville City.
2. Establish a new standard for inclusive outdoor recreation by developing an expansive trail system that serves both adaptive and traditional riders, rather than just a single adaptive-accessible trail. This objective directly supports our organization's commitment to making mountain biking accessible to all community members.
3. Partner with the adaptive sports community to create a model facility that demonstrates how thoughtful trail design can eliminate barriers to participation, building upon our extensive trail-building expertise while addressing an underserved market in outdoor recreation.

This project represents a strategic evolution of our organization's work, leveraging our established relationships with local parks and our technical expertise to address a significant gap in recreational opportunities for adaptive athletes. As the adaptive cycling industry advances, this facility will position Birmingham as a leader in inclusive outdoor recreation.